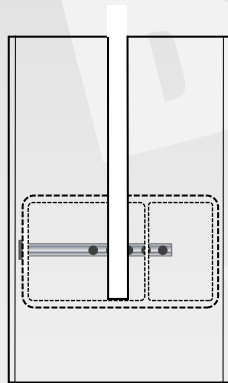


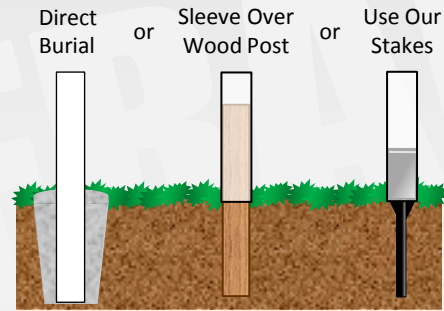
Post and Retaining Blocks are routed to accept your substrate. The substrate will be inserted into the post 2". This no rail design will allow for you to use a variety of shapes at the top and bottom of your sign and you will not lose any of the visible area.



Budget Frame

Your Substrate
Here

The **Budget Frame** is engineered to meet the requirements where a durable frame system is needed but at a low price point. Our retaining block system holds your sign firmly in place and is completely internal and not seen. With this clean look you can professionally display any sign.



Multiple Installation Options

Available in
White or KHAKI



Shown with optional Princeton Cap

Federation

Ball

Princeton

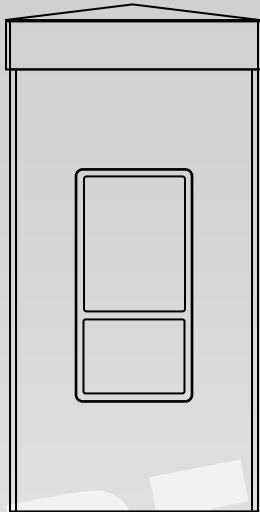
Gothic

New England

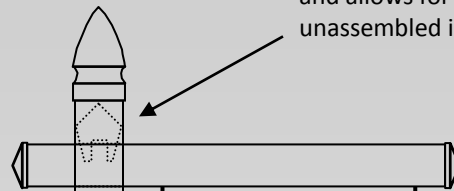


BUDGET FRAME

Vinyl Real Estate Post



The arm that your sign hangs from is routed into the post so that it goes through both sides. This design makes the arm stronger to resist any sagging. Once the arm is in place it is locked in using our key system that is completely hidden and requires no tools!

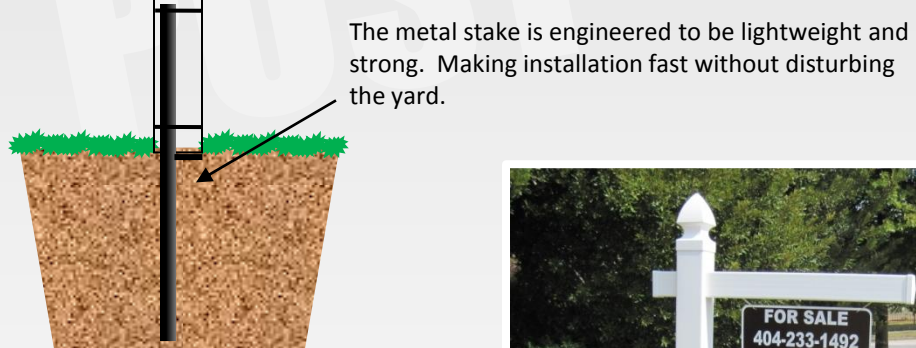


The patent pending key system fits internally and allows for your post to be assembled and unassembled in seconds. No tools needed!

Your Sign
Here

Our stainless steel hardware simply screws into two of the multiple eye hook locations. Then you can use the provided safety hooks to hang your sign.

Included with the Real Estate Post are the end caps for the arm and a gothic style post cap at no additional charge. The standard post length is 5' and a 36" arm that will accommodate a 24" wide sign. Longer post and arms are available upon request.



The metal stake is engineered to be lightweight and strong. Making installation fast without disturbing the yard.

Some of our accessory and cap options

Ball



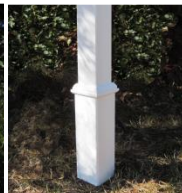
Standard



Gothic



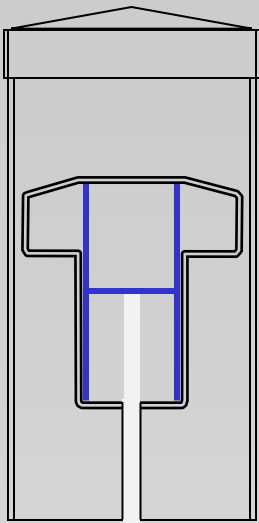
Base



Also Available
in KHAKI

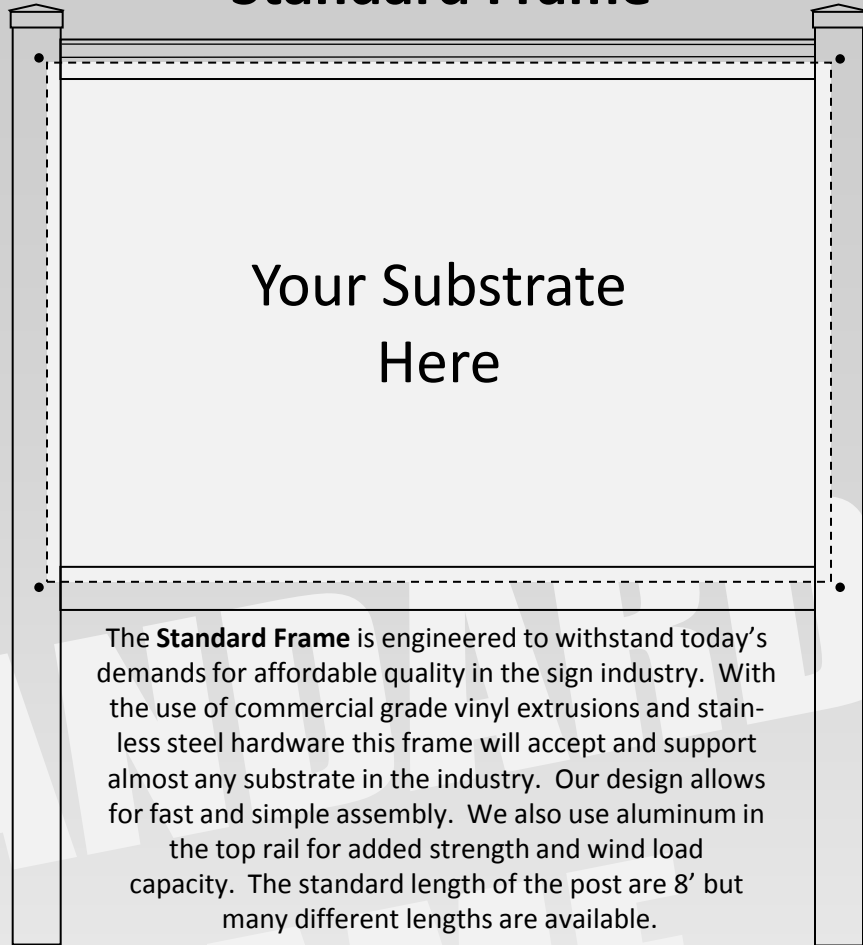


REAL ESTATE POST



Standard Frame

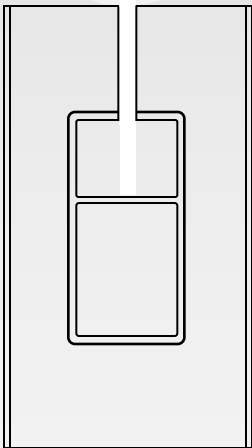
Your Substrate
Here



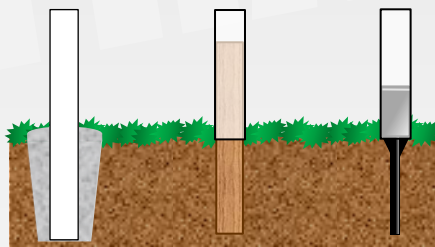
Post and Horizontals are routed to accept your substrate. Be sure you indicate how thick your substrate will be. The substrate will insert into the posts and rails. We recommend that you allow a 2" border on all four sides before any important graphics.

The **Standard Frame** is engineered to withstand today's demands for affordable quality in the sign industry. With the use of commercial grade vinyl extrusions and stainless steel hardware this frame will accept and support almost any substrate in the industry. Our design allows for fast and simple assembly. We also use aluminum in the top rail for added strength and wind load capacity. The standard length of the post are 8' but many different lengths are available.

Available in standard and custom sizes
Multi-panel systems are available as well



Direct Burial or Sleeve Over Wood Post or Use Our Stakes



Multiple Installation Options

Also Available
in KHAKI

Federation

Ball

Princeton

Gothic

New England



STANDARD FRAME